

EASY LATCH

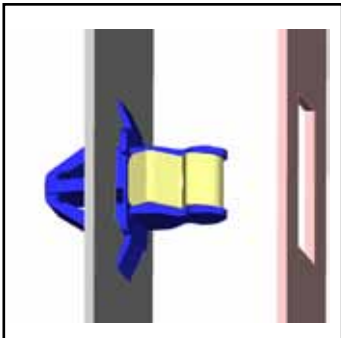


EASY LATCH is a simple system for the opening and closing by clipping such as:

- ◆ removable panels (e. g. trim elements)
- ◆ access trapdoors for equipment or machines
- ◆ removable floors

PRODUCT DESCRIPTION

EASY Latch is a clip designed to facilitate the assembly of two components. Assembled into a first panel this enables an opening and closing onto a second panel.

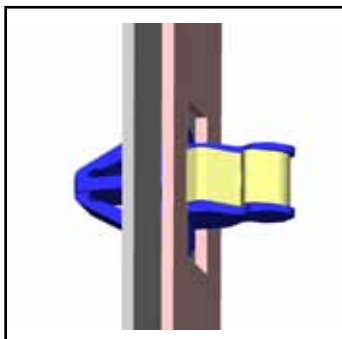


TECHNICAL DATA

- ◆ body: plastic
- ◆ metal spring clip: stainless steel
- ◆ panels thickness: 0,8 - 1.2 mm (for both panels)
- ◆ stamping: 8x8 mm
- ◆ assembly strength: 3 daN, dismantling strength: 25 daN
- ◆ closing strength: 6 daN, opening strength: 20 daN

AVANTAGES OF THE LISI SOLUTION

- ◆ cost effective
- ◆ optimised solution in one part
- ◆ easy manual assembly using little pressure
- ◆ reusability and constant performance thanks to the metal spring clip
- ◆ corrosion resistance (plastic and stainless steel)
- ◆ possibility to adjust the play in one direction



CONTACT US:

France & others: fastener-by-lisi.fr@lisi-automotive.com
Tel +33 1 34 46 60 00

Germany : fastener-by-lisi.de@lisi-automotive.com
Tel +49 622 177 46



Spain: fastener-by-lisi.es@lisi-automotive.com
Tel +34 91 607 03 33

China: fastener-by-lisi.cn@lisi-automotive.com
Tel +86 10 8645 1710